

Markham-Stouffville  
Crisis Pregnancy Centre

# Impact Report 2019





## Our Mission

**The Crisis Pregnancy Centre is dedicated to showing the love of Christ to the community through education and action by providing support to all individuals involved in crisis pregnancy, abortion recovery and/or parenting in difficult circumstances.**

Reflecting on 2019 has been both sobering and exciting. It has been a year marked with changes, transitions and realizations. We are excited as we look to the future and what God has planned for our ministry!

This year we said good-bye to two staff members: Janice Russell, who served as Executive Director faithfully for over 2 decades and our Administrative Assistant, Gayle McGuire. God is always faithful, and He provided the right people at the right time to step into the roles that needed filling. We are happy to welcome Melissa Julian to the role of Administrative Assistant and Julie Whalen to the role of Client Services Director. They are both passionate about our ministry and the God-given vision for it.

As you flip through this report, look past the numbers, see the vision for the future, and connect with the stories of those who received support this year. God has big plans for our little centre. We are charting a course that puts us back into our unique mission field. We want to reach clients earlier and in more meaningful ways. We are working to increase client connection, support avenues, and resources to serve to our full potential.

Will you continue to join us on this journey? We cannot reach our goal without your support. You are why we can do what we do. Your support throughout 2019, and your continued support, shows women and men in our community that you believe in them, that they are valued and that they will survive through crisis and thrive!

Thank you for your priceless support,

**Cheryl Lindquist**

Executive Director at Markham-Stouffville Crisis Pregnancy Centre

# What We Offer

## Our Services

Our centre uses the peer-support model to offer unique services to the community. Our Peer Supporters are trained with ongoing training to work with clients in compassion and truth.



### Pregnancy Tests

For people unsure if they are pregnant, we offer free self-administered pregnancy tests. Clients also receive pregnancy options support and/or reproductive education.



### Pregnancy Options

For people facing unexpected pregnancies or difficult circumstances causing questions about continuation of pregnancy, we offer an individualized care plan to support client decision-making and help them look at all options for their unique situation.



### Abortion Recovery

For people struggling emotionally after an abortion experience recently or in the past, clients work towards healing with a variety of resources.



### Community Education

For people wanting to make healthy choices to avoid unexpected pregnancy, clients and community groups explore topics such as Healthy Relationships, Sexual Integrity and Reproductive Education. This branch is currently being revised and updated.



### Emotional Support

Open to all clients navigating pregnancy, pregnancy loss, parenting in difficult circumstances, or the loss of a child.

## Our Programs

This year we offered a number of programs to support our clients as they move from crisis to thriving. This highlights a few of them.



### Growing Together: Prenatal Education and Support

For clients who are continuing their pregnancy and working towards a healthy birth. Group and individual support available.



### Moms and Tots

For clients looking to build their tribe with women who understand parenting in difficult situations. This weekly program focused on relationship building, social support for new moms, new parent education, and fun events!



### Living Hope: Abortion Recovery Care

For clients who sought emotional healing after an abortion experience. Using a variety of resources tailored to them, clients learned to grieve the loss of their baby, find forgiveness and live with hope again.



### Educational Workshops

We offered a variety of workshops for clients looking to learn and continue on a path to thriving. Topics are tailored to clients' needs and interests.

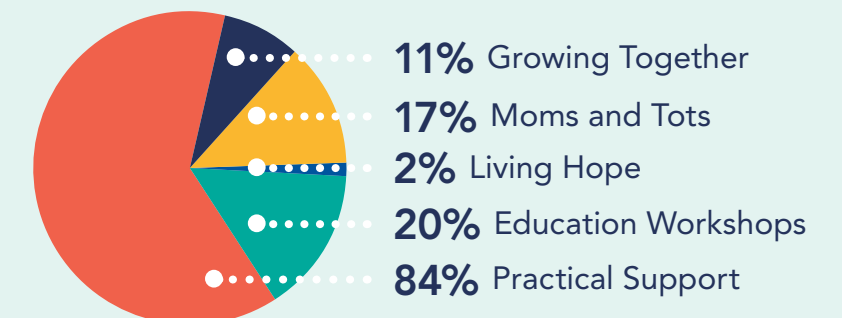


### Practical Support Program

For clients experiencing financial hardship impacting their ability to provide for children under the age of 2. Provided supplementary material items for children on a monthly basis.

## Program Engagement

The team is working hard to improve programs with low engagement in order to make it more relevant and effective.



# Meet Samantha\*

**It's not just about surviving through crisis, but thriving in the midst of crisis and beyond. Here are just some of the women who have found their strength and courage at our Centre.**

Things were looking bright for Samantha, where she was working hard to make her dreams a reality. With a promising job at a bank and good financial choices, she was able to invest in a condo.

What Samantha didn't plan for was becoming a single mom.

Her pregnancy wasn't easy and she needed bed rest for the last three months. Suddenly finding herself on short-term disability and financially stretched thin, anxiety set in over all the changes and challenges in her life.

Samantha gave birth to a beautiful brown-eyed little girl, and yet she didn't receive the support she had planned for. The birth father, who lives in a different country, had promised to be there, yet he made no effort to be present for his daughter's birth. Samantha felt so alone and overwhelmed. "It was a lot to take at one time," she says.

Family and friends whom she thought she could count on began to judge her choices. She couldn't turn to her mom for support because of their fractured relationship. The birth father didn't keep his promise to financially support their daughter. Thankfully Samantha isn't completely alone - her dad has shown love and support, helping as much as he could so they don't go hungry.

Just when Samantha felt like she was drowning in her reality, a York Region public health nurse connected her with the MSCPC.

At the MSCPC, Samantha found support through the Practical Support Program and the Moms & Tots group. Meeting other moms in similar circumstances helped her see she is not alone. They understood her struggles and shared resources and parenting

tips. Samantha believes her anxiety lowered because of the weekly social time at the MSCPC and the support of the caring staff. She is thankful for a place where she is accepted and not judged.

She still has sad days and anxious moments, but with her father and the MSCPC's support, she has been able to make plans again. She hopes to save money and gain some financial stability by moving in with her father and renting out her condo. Returning to work and arranging childcare will be a challenge, but she knows that she is up for it.

The MSCPC has helped Samantha see that she is resourceful and resilient, and she believes the time will come when she will give back to the MSCPC community. "It will be a full circle! Because of the support I received at the centre, I will be able to help others."

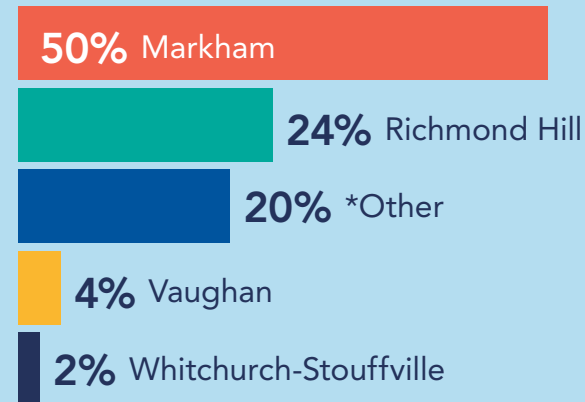
*\*Name changed to protect client privacy*



# Our Impact



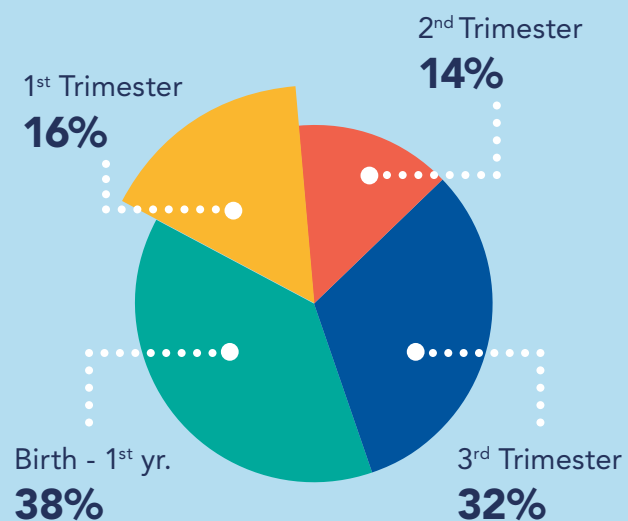
We are the only crisis pregnancy centre in Southern York Region. Here's a census of our clients who visited our Centre to access our services and programs.



\*Other accounts for smaller towns such as Unionville, Maple, Thornhill, etc.

## Our Clients

Our clients varied in stages when they reached out to the Centre for help. Our goal is to connect with clients on their 1<sup>st</sup> trimester.



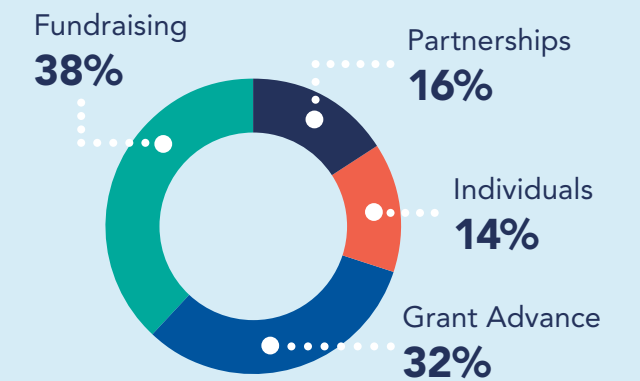
Without the faithful support of our volunteers on a weekly basis to serving, the Centre would cease to exist.



# Financial Highlights

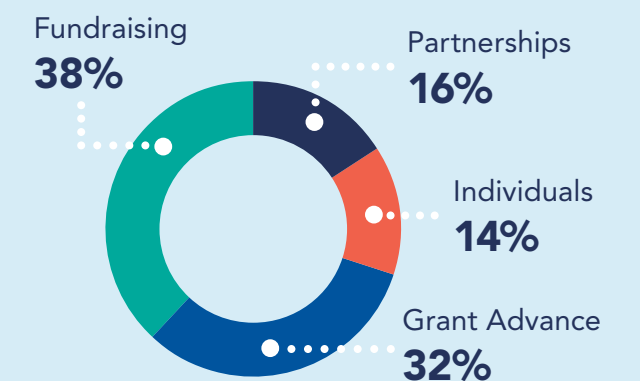
## Sources of Funds\*

Fundraising Events (net)	\$30,111
Partnerships	\$30,111
Individual Donations	\$30,111
Grant Advance	\$30,111
	<b>\$30,111</b>



## Uses of Funds\*

Programs & Services	\$30,111
Revenue Generation	\$30,111
Administration	\$30,111
	<b>\$30,111</b>



**100%**

Of the funds generated through donations and fundraising are dedicated to running our programs and services, along with other administrative costs.

**\$12K**  
Monthly Budget

Is needed in order to keep the doors open to the community.

**Would you consider donating?**

\*Complete financial report in Annual Report is available on our website at [mscpc.ca](http://mscpc.ca)

# Thank You

Without you, nothing we do would be possible. With your generosity, we are able to help people better manage their lives in times of crisis and build wellness and resilience throughout their journey.

The list below gives a glimpse of the community in which we have the privilege of counting on. From the bottom of our hearts, thank you for your generosity.

## Our Partners

Central United Church · Cornerstone Community Church · Eastridge Evangelical Missionary Church · Ebenezer United Church · Hillside Evangelical Missionary Church · Hope Bible Church Markham · In2one Community Church · Langstaff Assembly · Markham Baptist Church · Markham Chinese Presbyterian Church · Milliken Wesleyan Methodist Church · Rouge Valley Mennonite Church · St. Andrew's United Church · The Bridge · Unionville Alliance Church · Unionville Baptist Church

## Our Community Sponsors

100 Women Who Care Markham · Cora Breakfast and Lunch (Markham and Unionville locations) · Mandarin Markham East

## Our Supporters

Last but not least, a sincere thank you to our dedicated volunteers, placement students, individual donors and prayer warriors.

# Our Bright Future

We are proud to have over 29 years of experience in supporting the most vulnerable during their time of crisis and are looking forward to seeing what God has in place for us in the many years to come.

Our vision for the next few years at the MSCPC is to refocus and get back to serving in our core mission of Pregnancy Options Support, Abortion Recovery Care and Preventative Education for clients and the community.

Based on our statistics and experiences with clients over the past 3 years, it has become evident that our organization is in the midst of a mission drift. We have been busy doing wonderful things for our community within our scope of practice, but we are not reaching the clients experiencing an unexpected pregnancy in the critical first few weeks when the need for a listening ear, compassionate support, and truth is so needed.

We are also not connecting with women and men who are struggling emotionally after an abortion experience. They are going through life with buried pain that they don't know what to do with, and they can't find us. In addition, we haven't stayed up to date with programs that would speak to individuals and groups about how to avoid experiencing a pregnancy before they are ready. This needs to change!

God has shown us a vision of going back to our core mission field, and it's scary but awesome! 2020 marks the start of a growth plan where our focus is getting back to the heart of why we are here. It will start with the equipping of the Board of Directors, staff, and volunteers and progress to reach our core clients and develop programs needed to support our three main service branches (Pregnancy Options, Abortion Recovery Care and Preventative Education).

We need your prayer and support more than ever before, especially knowing that as we prepare and step out in faith into a very controversial area of support we will be attacked. Please do pray for us, and donate to meet our financial needs... God has big things planned!

# Get Involved

The Markham-Stouffville Crisis Pregnancy Centre (MSCPC) depends on the generous support of its donors – individuals, families, churches and local businesses in order to run our programs.

We use your generous donations to help us serve the community through our services and programs for clients in the southern York Region area. 100% of our annual revenue comes from private donations, so all donations are gratefully received.

For more donation information, please visit our website at [www.msccpc.ca/donate](http://www.msccpc.ca/donate).

